

A Remarkable Account of a Liver, appearing Glandulous to the Eye; communicated by M^r John Brown, Chirurgeon of S^t Thomas's Hospitall in Southwark; in a Letter to one of the Secretarys of the Royal Society.

S I R,

I Send you here the figure of the *Liver* of an Hydro-pical Person, a Patient of our *Hospitall*, (as it was accurately taken by M^r *Faithorn*,) which I thought so curious as to be worthy the notice of the *Royal Society*, and therefore have presumed to communicate it to you.

The Person was about 25 years of age, a Soldier in one of his *Majesty's* Regiments here in Town; who contracted his distemper by drinking much water, when he could not stirr from his duty, and catching cold at nights in being upon the guard: He was under the care of our Physicians for some time, by whose directions his swellings did by times abate; but afterwards it was observed, that the method which had been beneficiall to others, had not here the like success, his swellings returning upon him as before; so that there was nothing more now to be thought of, but a *Paracenthesis*; which operation however we judged very hazardous, by reason of the time of the year; and for that the Patient was very much emaciated; yet he being so much swell'd, that it was uneasy to him to ly in his bed, he importun'd us very often, and with great earnestness, that the Operation might be performed. Whereupon we taking *Hippocrates* rule, *In casu ancipiti præstat Remedium anceps, quam nullum*; and thinking it better to attempt a cure that might be but barely possible, then to abandon him to the certain expectation of

of death; a *Paracentesis* by the Physicians consent and directions, was made by me the fourteenth of *November* last past, whereby we drew from the Patient about 3 pints of Brinish Liquor, and within 4 days after as much more, the next day morning he dyes, and his death as was found upon dissection, was partly occasioned by a mortification upon his *Scrotum* and *Penis*.

This Operation was performed to the satisfaction of the Physicians and Chirurgeons that saw it, and by it the Patient had some ease for the present.

Upon opening the body, I believe I took out about 24 quarts of water; he had a large inflammation upon the *Peritonæum*; all his other inward parts not much disaffected, except the *Liver*; which now I am going to describe to you.

Its magnitude was not extraordinary, but rather seemed less than usuall, but that which was very remarkable (and I think the like case scarce ever observed by any *Author*;) and seems much to confirm the opinion of the Learned *Malpighius*, is this; It consisted in its concave, convex, and inward parts of *glands*, which (with the Vessells) made up the whole substance thereof; these *glands* contained a yellowish *Ichor*, like so many *Pustulæ*, and was I suppose part of the bilious humor lodged in the same, tho otherwise the *Liver* between the glands was of its usuall reddish colour. In the bladder of Gall, we found a soft friable stone, but otherwise nothing considerable further in that part. The *Liver* was opened before the Physicians of our *Hospital* D^r *Dawkins*, and D^r *Briggs*, as also D^r *Tyson*, and others who had the curiosity to see it; at which place Mr *Faithorn* was likewise, who then took that draught which I now present to you; so that this being attested by so good Judges, I need add no more but that this case by them all was thought worthy to

be presented to your excellent *Society*, which therefore at their request I have adventured to do, hoping you will favourably interpret this presumption of,

Sir,

December 15th.

Your faithfull Servant

1685. London.

J. B R O W N E.

A Description of the cut of the Liver, &c.

Vid. Tab. 3. Fig. 1.

- A. A. A. } Describes the *Glands* in the concave part
of the lesser lobe of the *Liver*.
B. B. B. } Describes the *Glands* in the concave part
of the greater lobe of the *Liver*; which
were of different magnitudes, tho in ge-
nerall they were much less in the lesser,
then in the greater.
C. C. C. C. } Describes the inward part of the greater
lobe of the *Liver* as it was divided.
D. D. D. D. D. } Are several black specks that appear'd in-
serted in those *Glands*, which were proba-
bly from the divarications of the Vessels,
being divided upon opening this lobe.
E. } The *Vesicula Fellis*, which was of a green-
ish colour.
F. } The *Vena Porta* tyed up with the *Ductus*
Biliarius, &c.
G. } A particular sett of *Glands* lodged be-
tween the same and *Vena Cava*.
H. *Vena Cava*.

I. Part of the *Ligamentum Suspensorium*.

I do not here present you with the convex part of the *Liver*, it being in every respect, the same with the concave part of both lobes as to its *Glands* here described.

Two Ex.

Philosoph. Transact. Numb. 178.

Tab. 3.

Fig. 1.

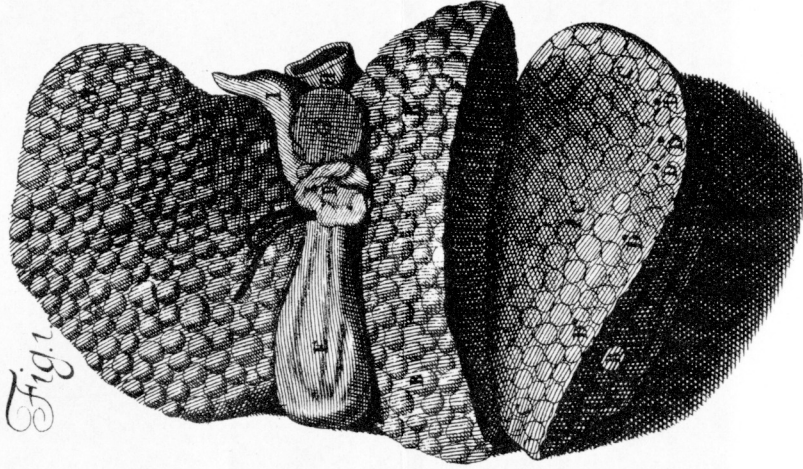


Fig. 2.

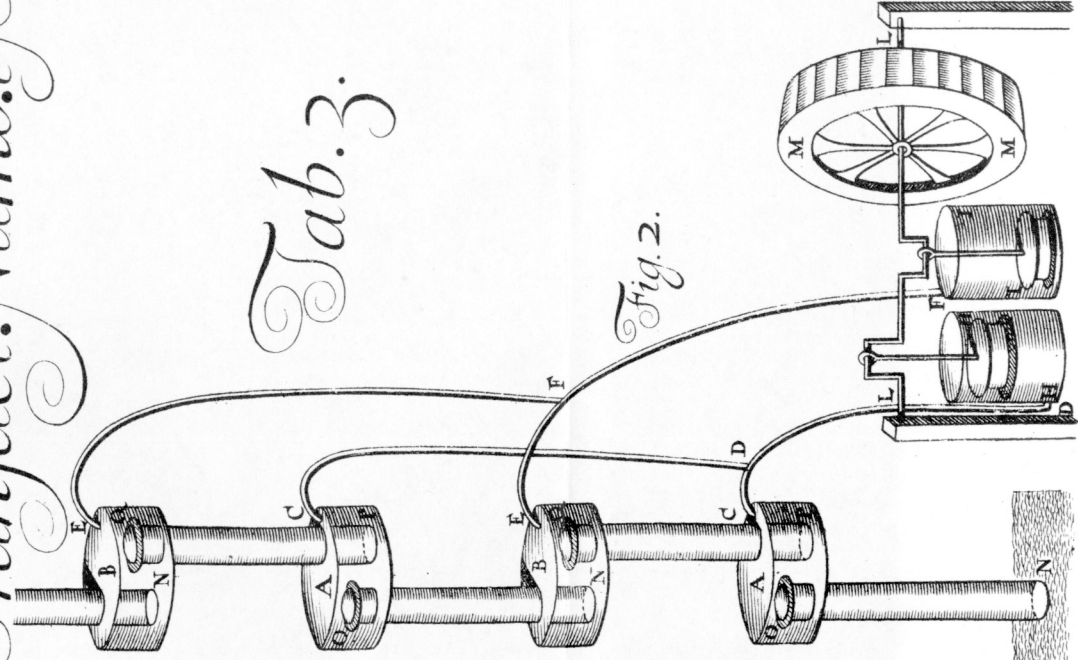


Fig. 3.

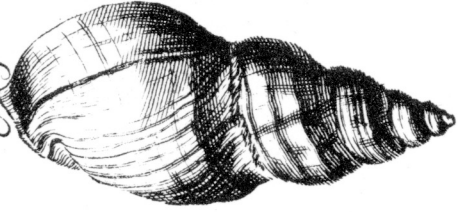


Fig. 4.



Fig. 5.



Fig. 6.



Fig. 7.



Fig. 8.

